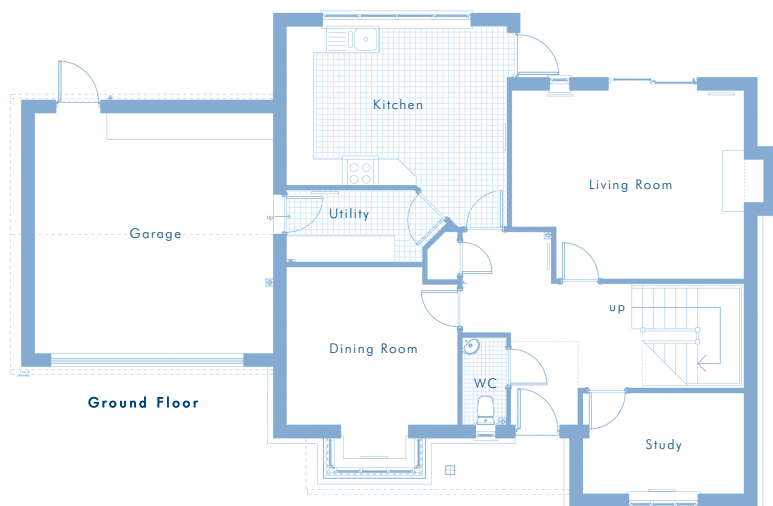
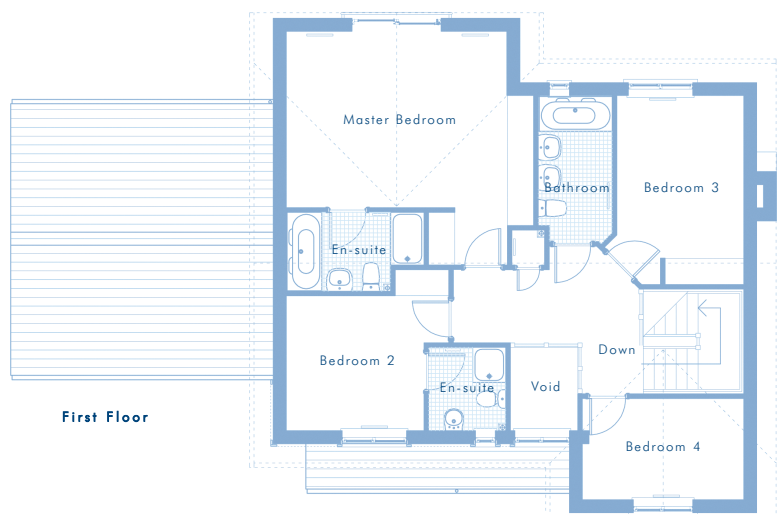


porthcawl



Ground Floor

| | |
|-------------|---|
| Living Room | 4.30m (14'1") x 5.30m (17'5") |
| Dining Area | 3.91m (12'10") x 3.61m (11'10") (escl. bay) |
| Kitchen | 5.04m (16'6") x 3.63m (11'11") |
| Utility | 1.65m (5'5") x 3.11m (10'3") |
| WC | 1.00m (3'3") x 2.00m (6'7") |
| Garage | 5.48m (18'0") x 5.45m (17'11") |



First Floor

| | |
|------------|-------------------------------|
| Master Bed | 5.05m (16'7") x 4.02m (13'2") |
| En-suite | 3.15m (10'4") x 1.81m (5'11") |
| Bed 2 | 3.15m (10'4") x 3.07m (10'0") |
| en-suite | 1.90m (6'3") x 1.77m (5'10") |
| Bed 3 | 3.70m (12'2") x 2.90m (9'6") |
| Bed 4 | 3.69m (12'1") x 2.29m (7'6") |
| Bathroom | 3.33m (11'0") x 1.69m (5'7") |

p e n t r e n i c k l a u s v i l l a g e

Sales Office Telephone: 01554 746736

Sales Office Fax: 01554 746727

email: sales@machynyshomes.co.uk

www.machynyshomes.co.uk

All measurements are to maximum dimensions. Measurements shown may vary slightly.
For illustration purposes only. Some features may vary from those shown.